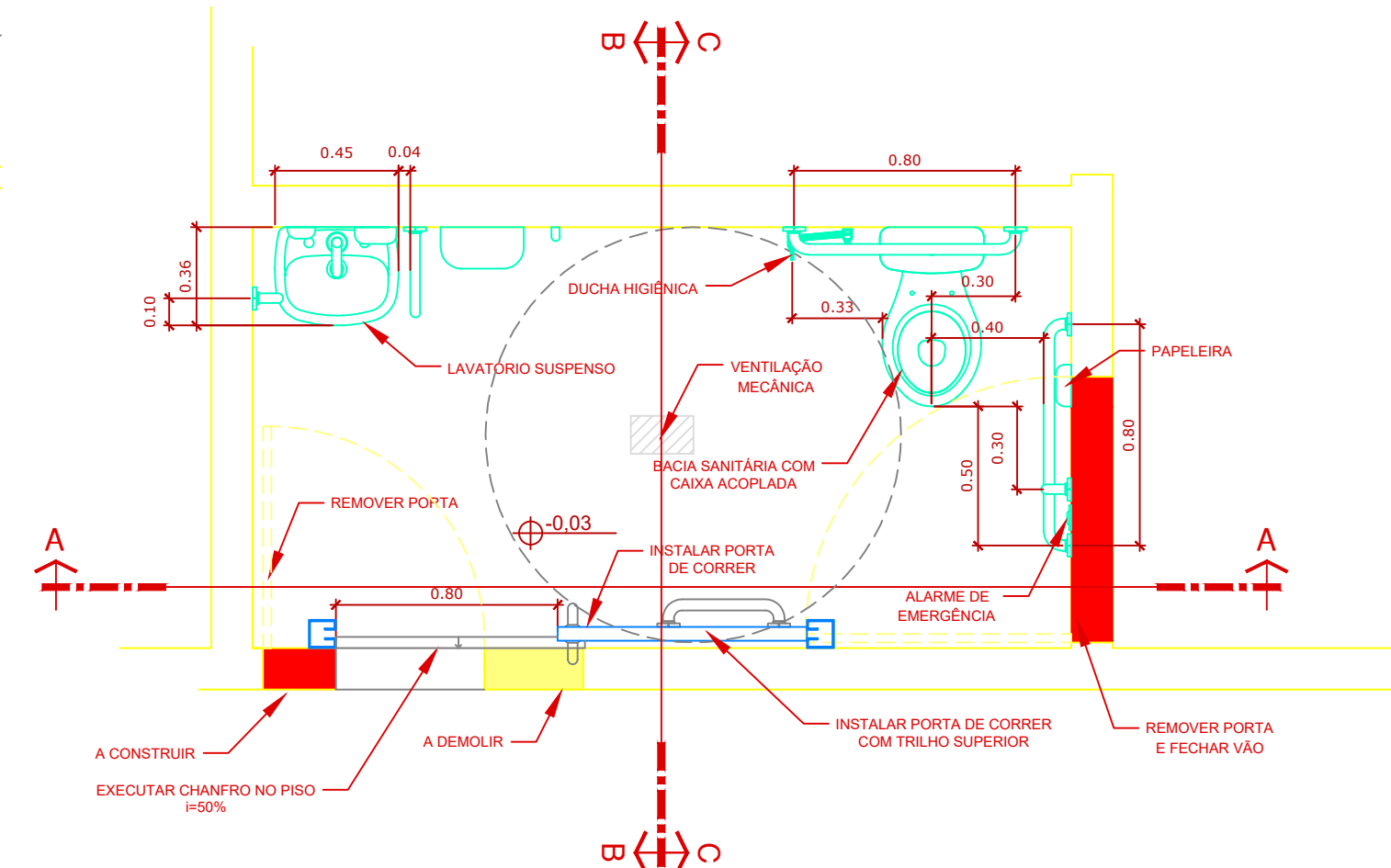
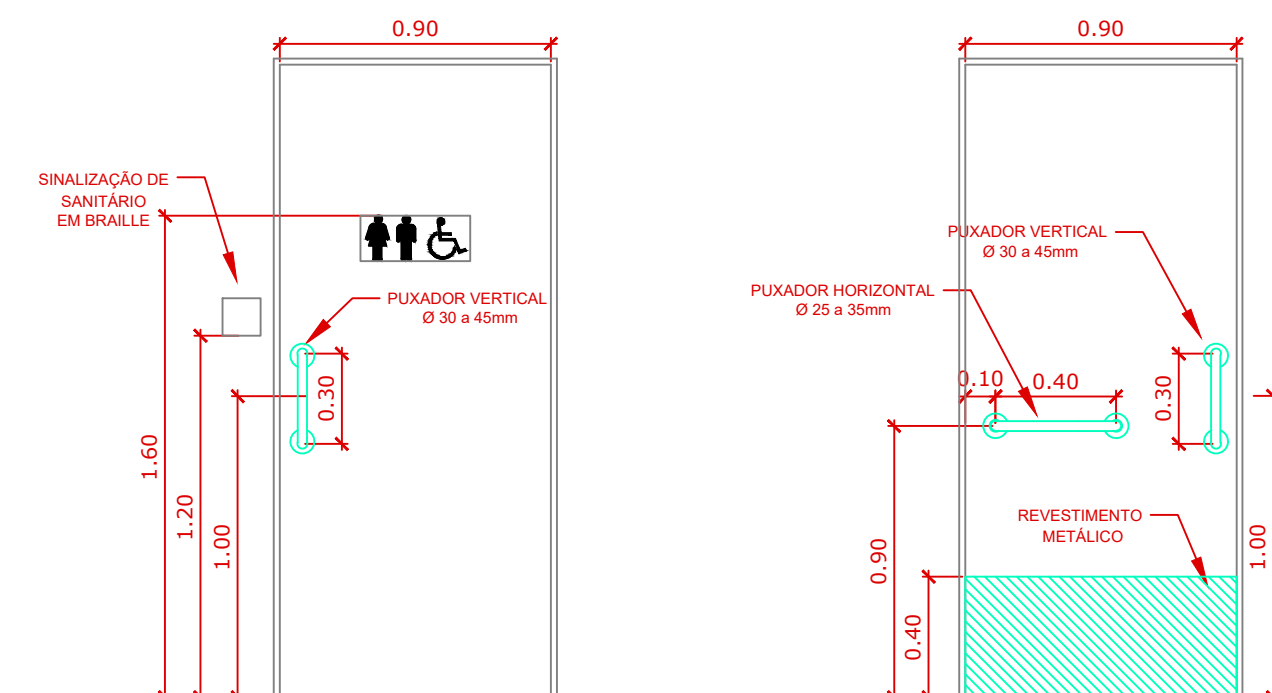


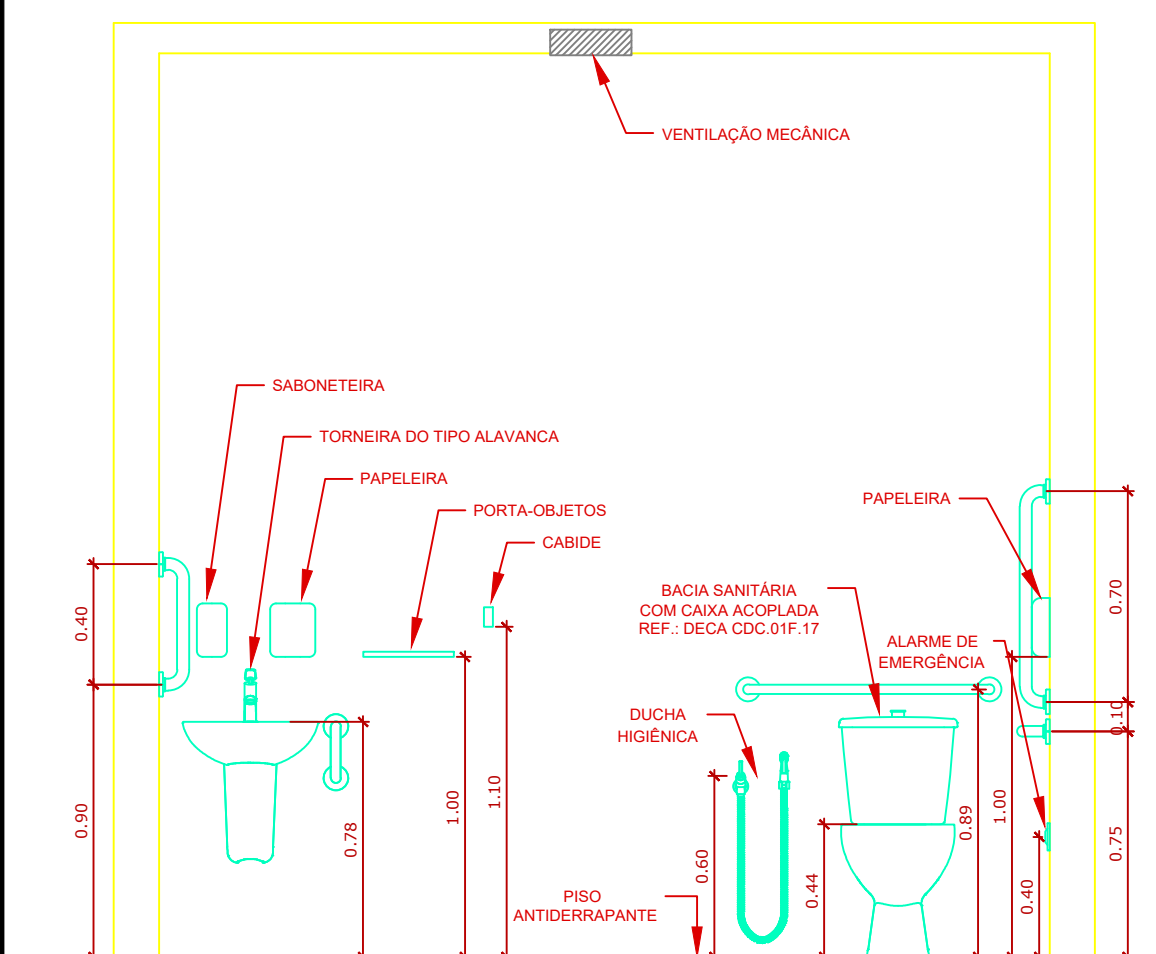
Planta de intervenção  
Esc. 1: 50



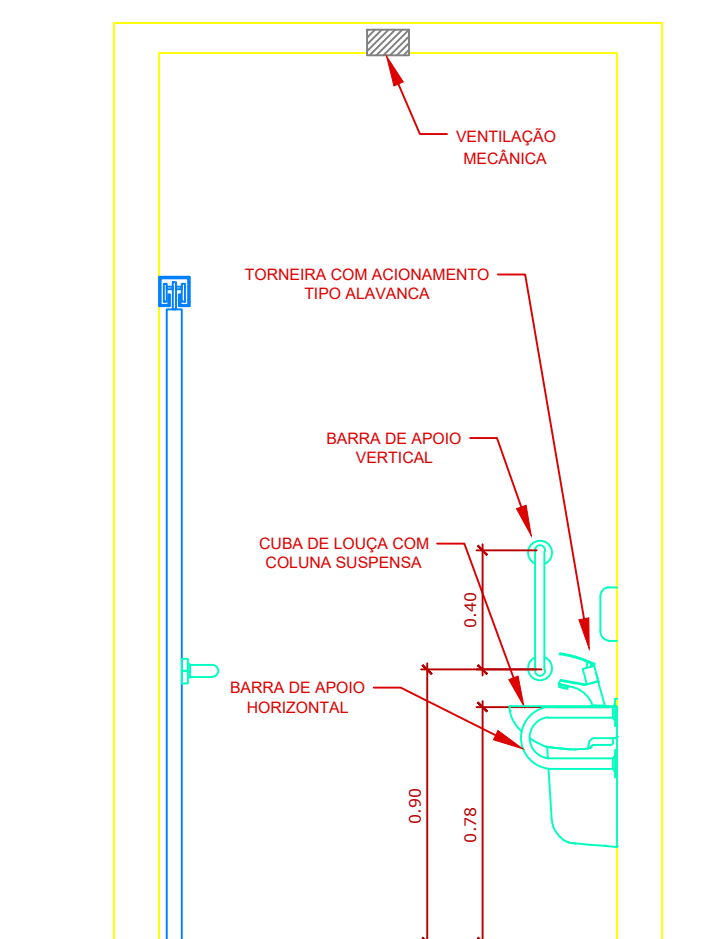
Detalhe 04 - Sanitário acessível unissex a ser executado  
Esc. 1: 25



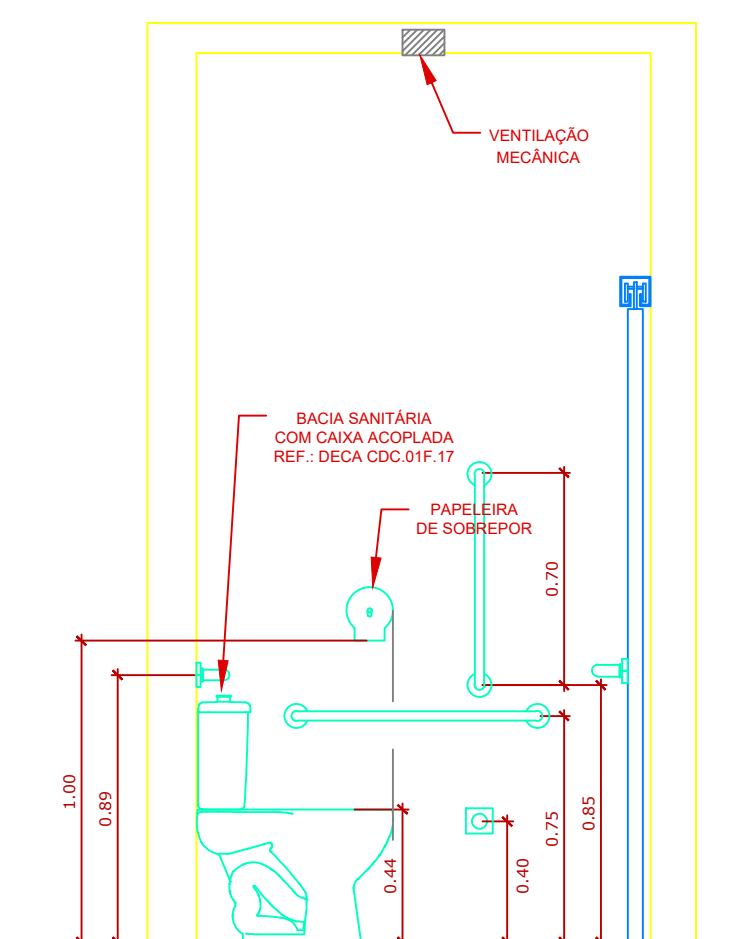
Modelo de porta para sanitário acessível  
Esc. 1: 25



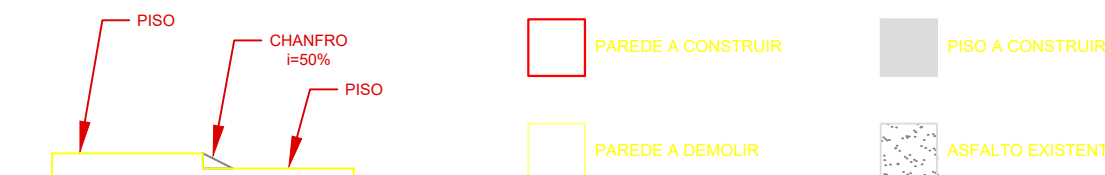
Corte AA  
Esc. 1: 25



Corte BB  
Esc. 1: 25



Corte CC  
Esc. 1: 25



**PREFEITURA MUNICIPAL DE SÃO CARLOS**  
SECRETARIA MUNICIPAL DE HABITAÇÃO E DES. URBANO

**CEDIN**  
Rua Santos Dumont, 485.  
Projeto de Acessibilidade

DESENVOLVIMENTO  
DPU/SMH DU

RESPONSÁVEL PELO PROJETO  
Arq. Renato Toshio Nishimura  
CAU / SP A55090-6

JAN.2019

ESCALAS INDICADAS

02/03