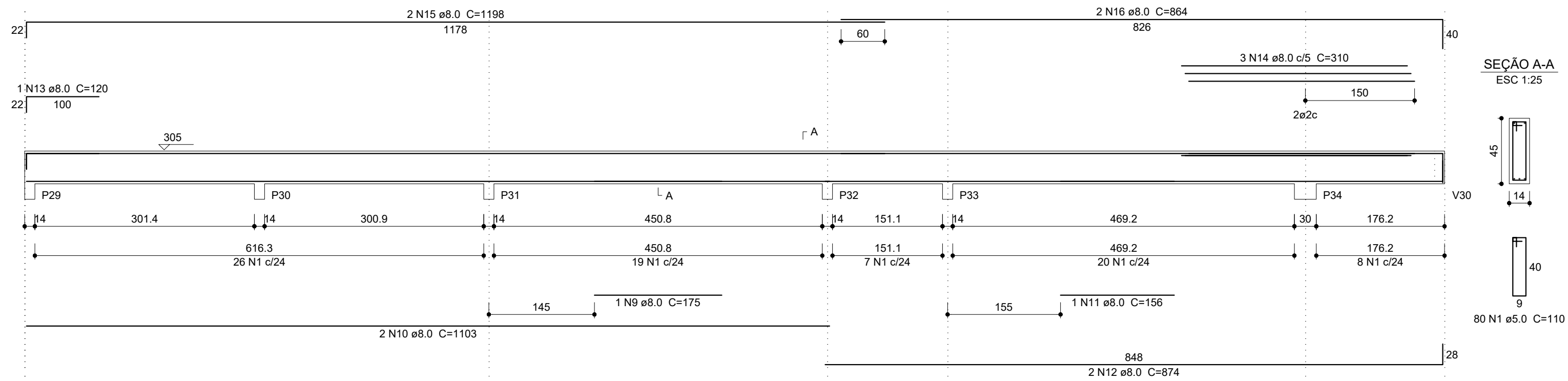
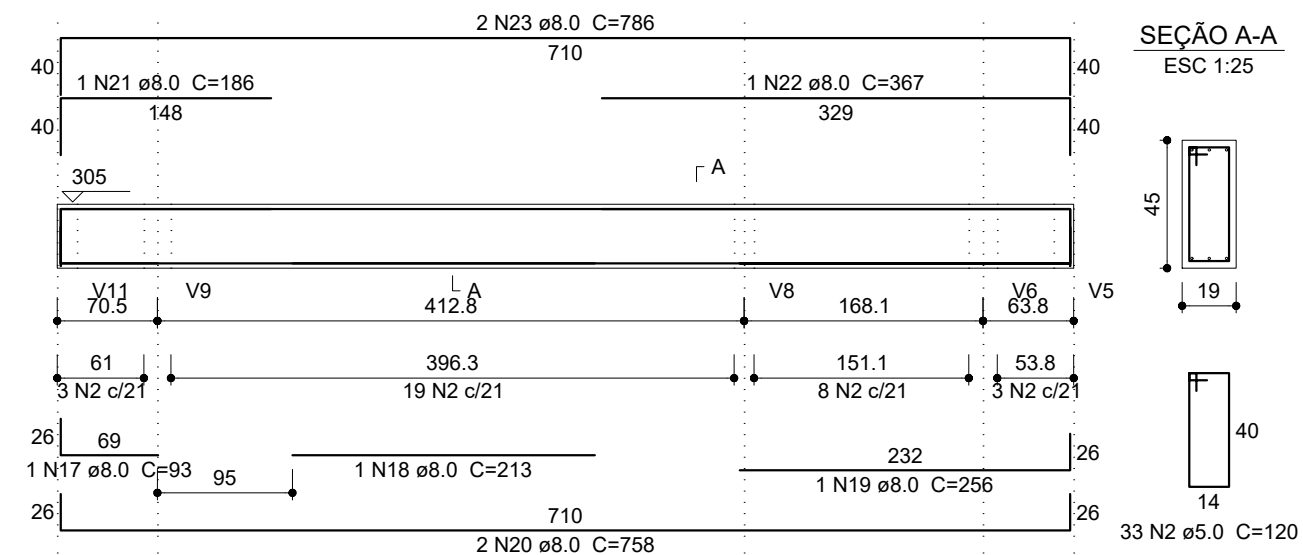


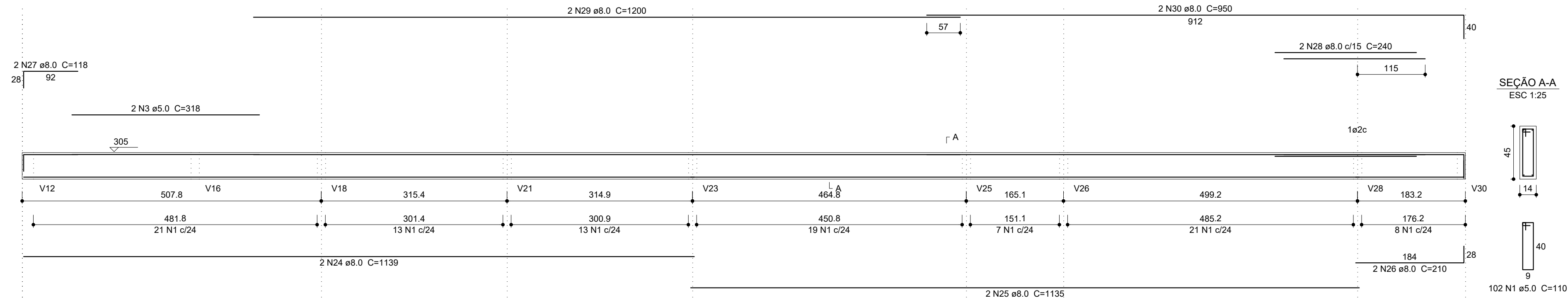
V10  
ESC 1:50



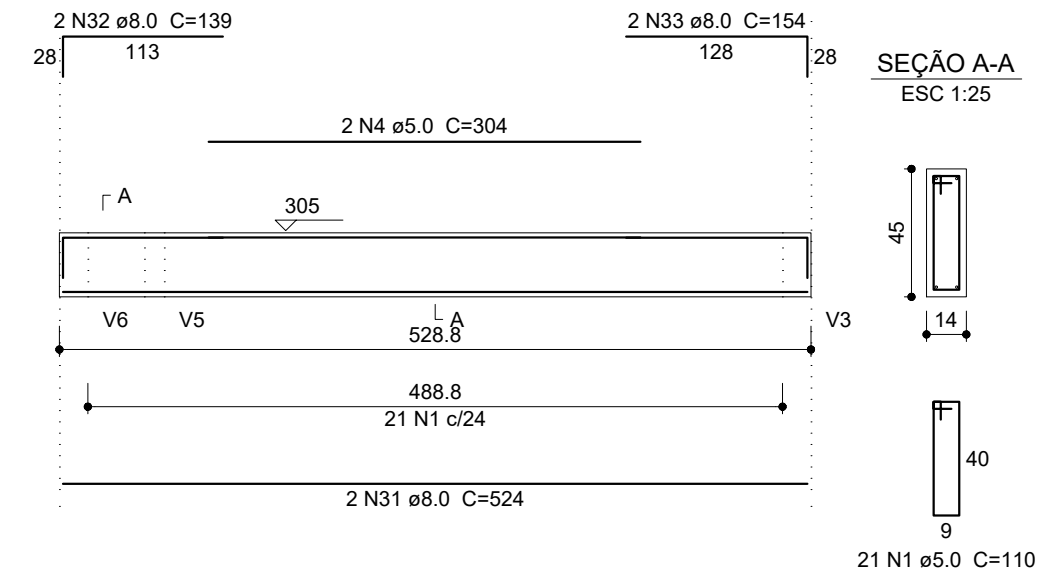
V12  
ESC 1:50



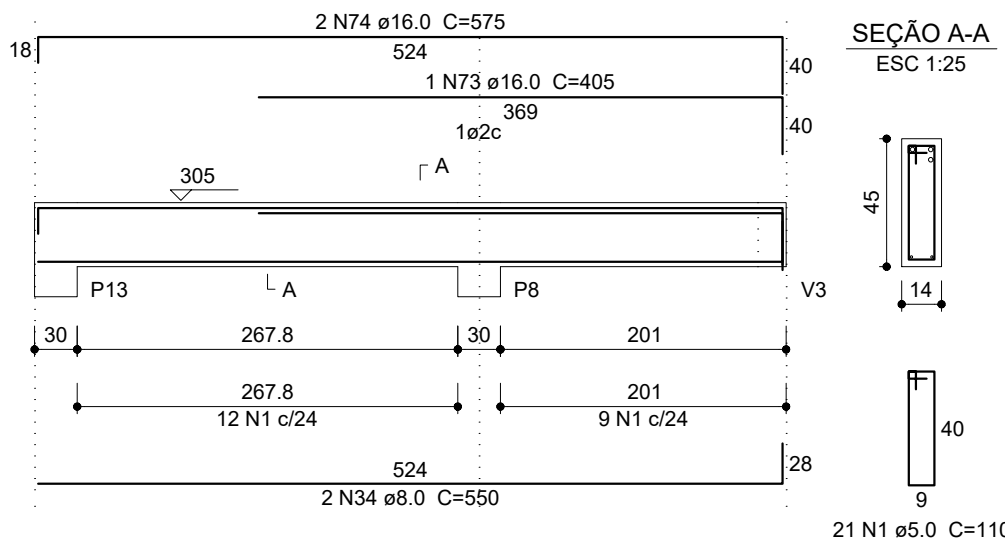
V11  
ESC 1:50



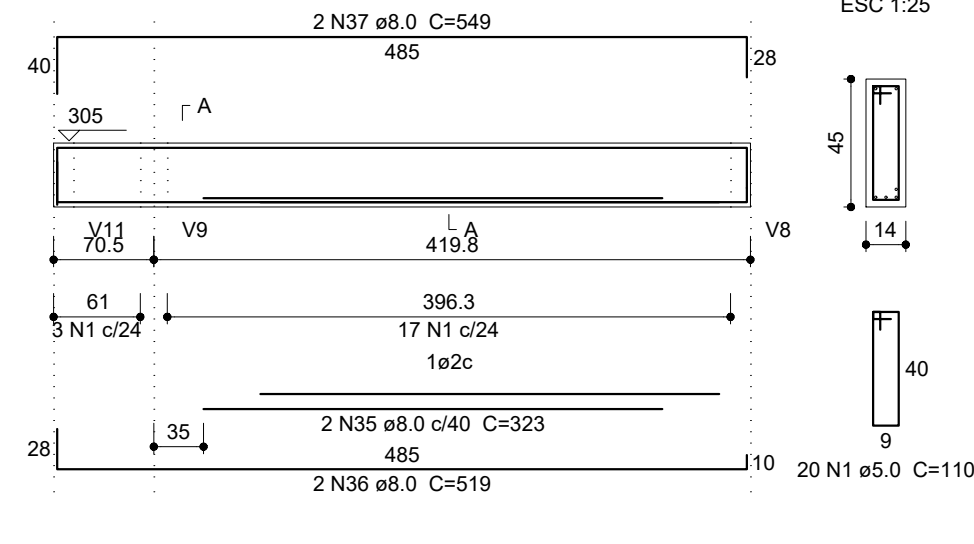
V14  
ESC 1:50



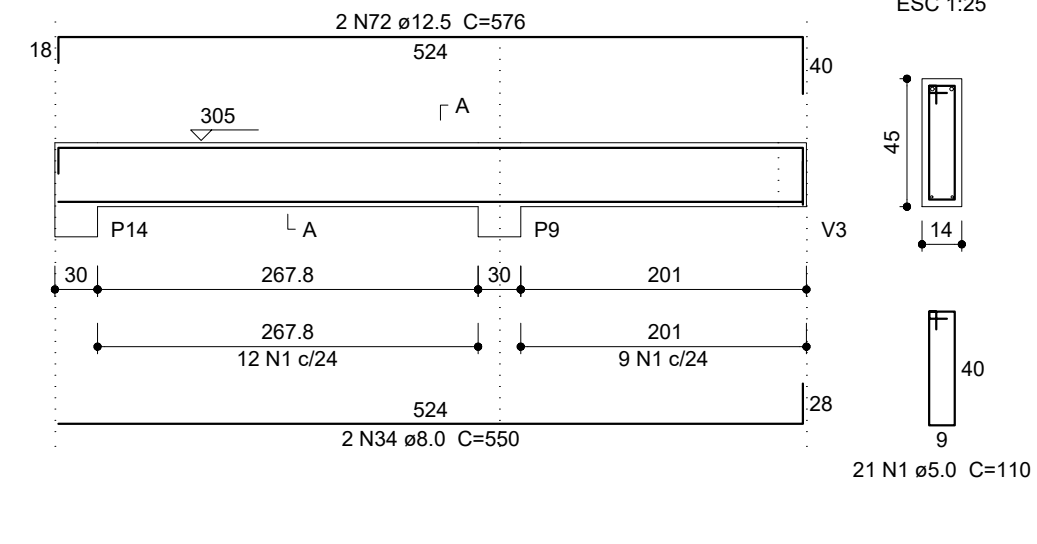
V15  
ESC 1:50



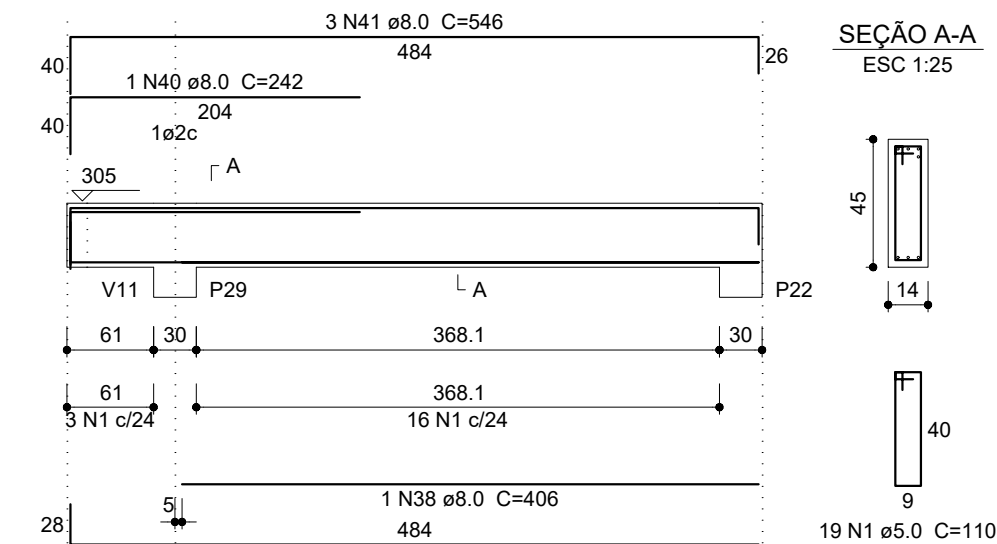
V16  
ESC 1:50



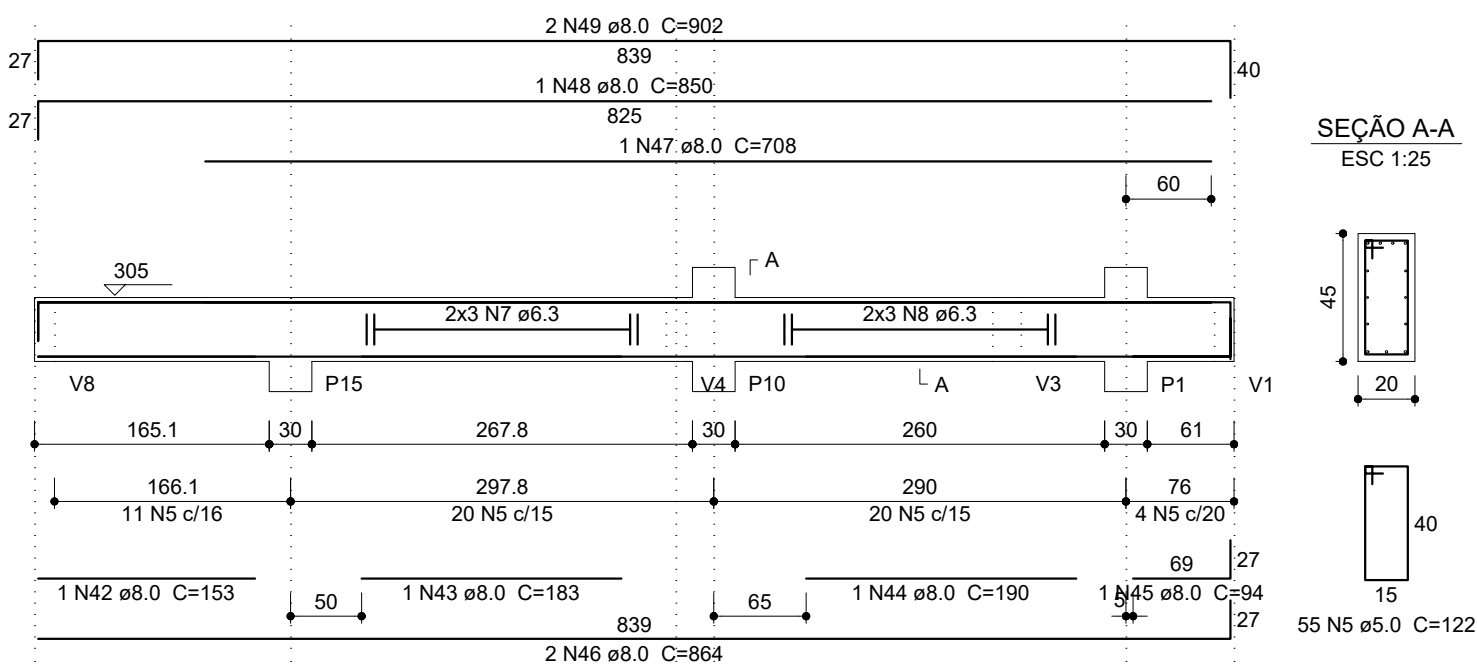
V17  
ESC 1:50



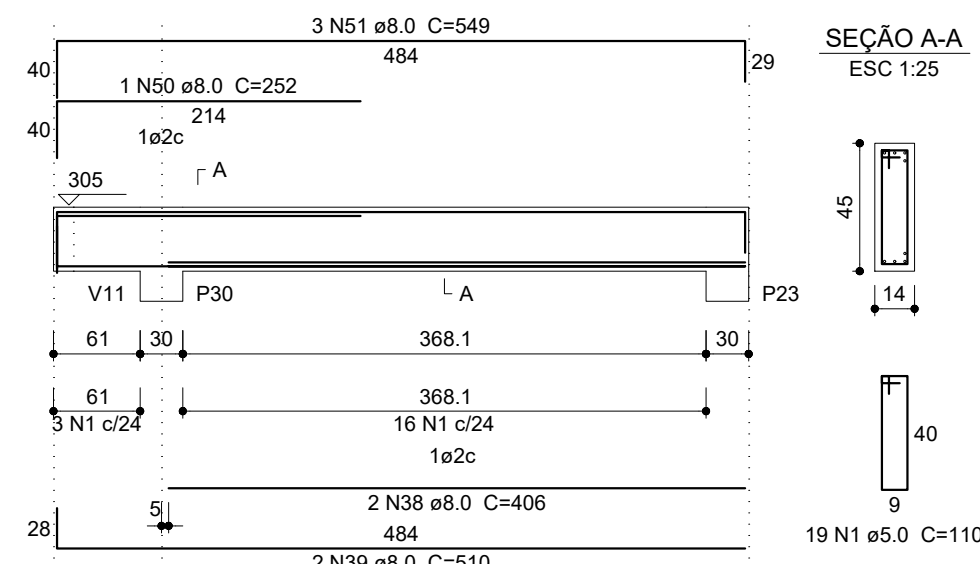
V18  
ESC 1:50



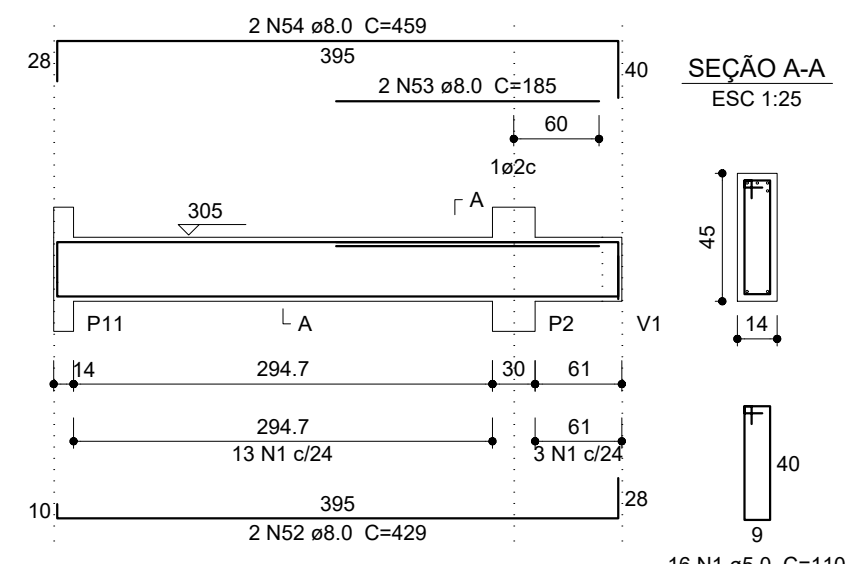
V20  
ESC 1:50



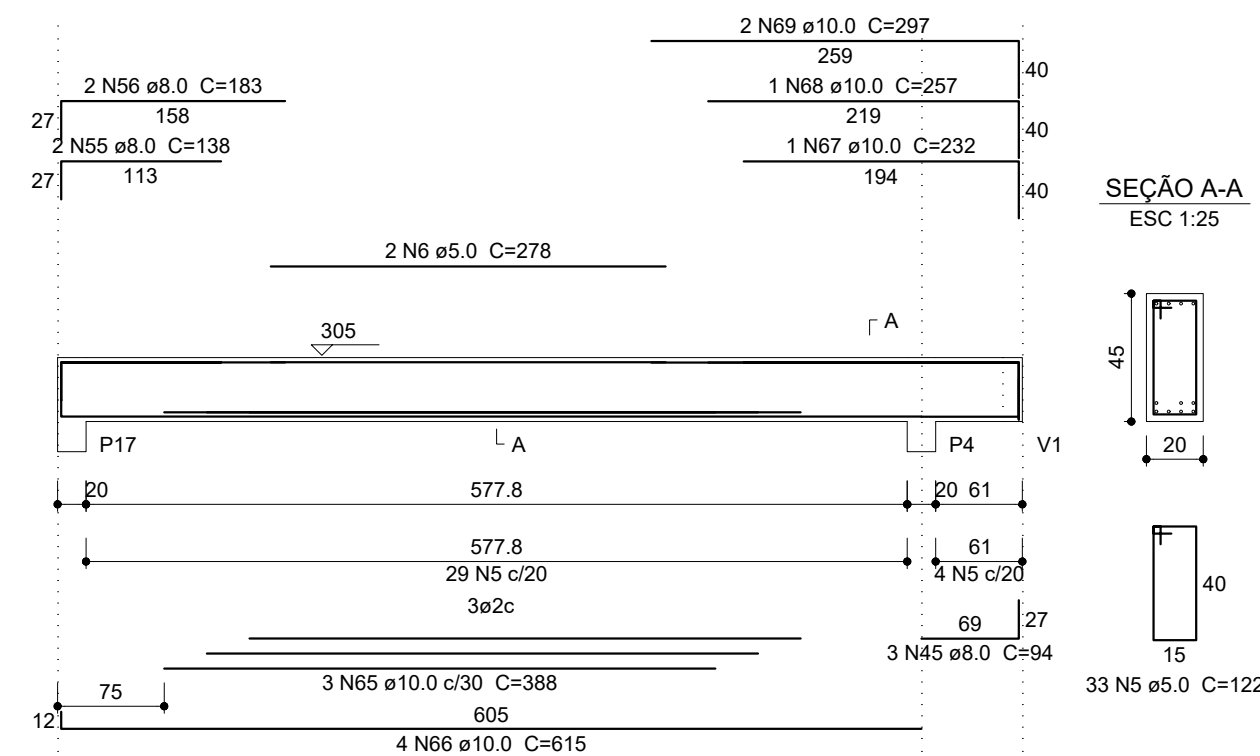
V21  
ESC 1:50



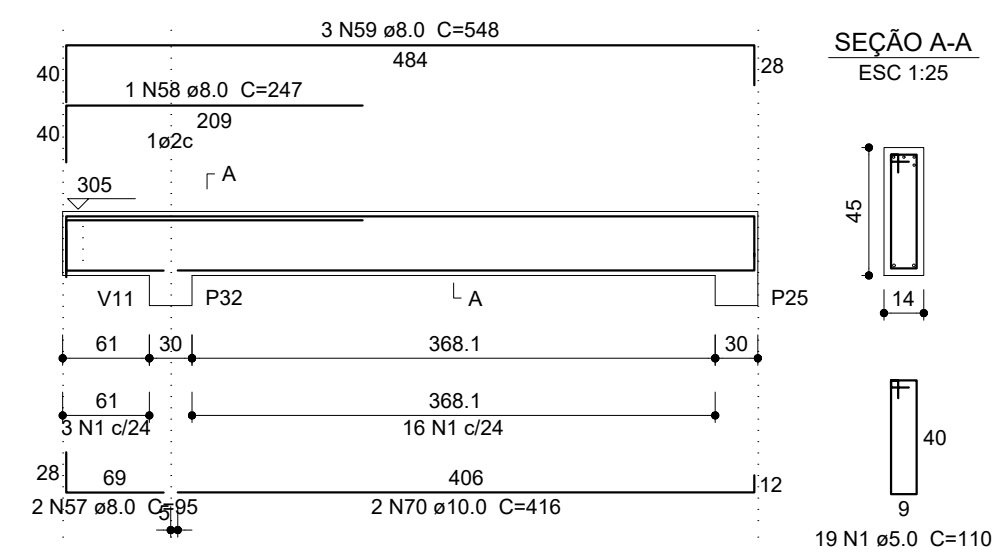
V22  
ESC 1:50



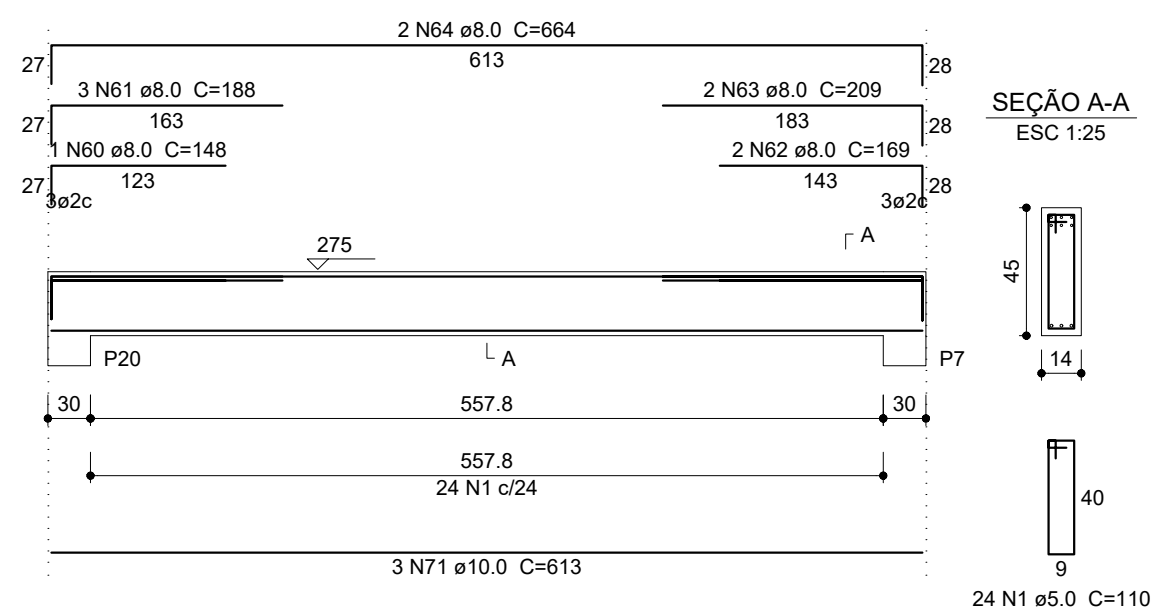
V24  
ESC 1:50



V25  
ESC 1:50



V29  
ESC 1:50



Relação do aço

AÇO	N	DIAM (mm)	QUANT (Barras)	UNIT (cm)	C.TOTAL (cm)
CA60	1	5.0	362	110	39820
	2	5.0	33	120	3960
	3	5.0	2	318	636
	4	5.0	2	304	608
	5	5.0	88	122	10736
CA50	6	5.0	2	278	556
	7	6.3	6	CORR	1938
	8	6.3	6	CORR	1890
	9	8.0	1	175	175
	10	8.0	2	1103	2206
	11	8.0	1	156	156
	12	8.0	2	874	1748
	13	8.0	1	120	120
	14	8.0	3	310	930
	15	8.0	2	1198	2396
	16	8.0	2	884	1728
	17	8.0	1	93	93
	18	8.0	1	213	213
	19	8.0	1	256	256
	20	8.0	2	758	1516
	21	8.0	1	186	186
	22	8.0	1	367	367
	23	8.0	2	786	1572
	24	8.0	2	1139	2278
	25	8.0	2	1335	2270
	26	8.0	2	210	420
	27	8.0	2	118	236
	28	8.0	2	240	480
	29	8.0	2	1200	2400
	30	8.0	2	950	1900
	31	8.0	2	524	1048
	32	8.0	2	139	278
	33	8.0	2	154	308
	34	8.0	4	550	2200
	35	8.0	2	323	646
	36	8.0	2	519	1038
	37	8.0	2	549	1098
	38	8.0	3	406	1218
	39	8.0	4	510	2040
	40	8.0	1	242	242
	41	8.0	3	546	1638
	42	8.0	1	153	153
	43	8.0	1	183	183
	44	8.0	1	190	190
	45	8.0	4	94	376
	46	8.0	2	864	1728
	47	8.0	1	708	708
	48	8.0	1	850	850
	49	8.0	2	902	1804
	50	8.0	1	252	252
	51	8.0	3	549	1647
	52	8.0	2	429	858
	53	8.0	2	185	370
	54	8.0	2	459	918
	55	8.0	2	138	276
	56	8.0	2	183	366
	57	8.0	2	95	190
	58	8.0	1	247	247
	59	8.0	3	548	1644
	60	8.0	1	148	148
	61	8.0	3	188	564
	62	8.0	2	169	338
	63	8.0	2	209	418
	64	8.0	2	664	1328
	65	10.0	3	388	1164
	66	10.0	4	615	2460
	67	10.0	1	232	232
	68	10.0	1	257	257
	69	10.0	2	297	594
	70	10.0	2	416	832
	71	10.0	3	613	1839
	72	12.5	2	576	1152
	73	16.0	1	405	405
	74	16.0	2	575	1150

Resumo do aço

AÇO	DIAM (mm)	C.TOTAL (m)	PESO + 10 % (kg)
CA50	6.3	38.3	10.3
	8.0	509.6	221.2
	10.0	73.8	50
	12.5	11.6	12.2
	16.0	15.6	27
CA60	5.0	563.2	95.5
PESO TOTAL (kg)		CA50	320.7
		CA60	95.5

Volume de concreto (C-25) = 7.63 m³

PREFEITURA MUNICIPAL DE SÃO CARLOS  
SECRETARIA MUNICIPAL DE OBRAS PÚBLICAS

Projeto:	ENG. WONG	CONSTRUÇÃO DE CRAS NO CONJ. RESIDENCIAL ITATIAIA	Data:	OCTUBRO/2019
Desenho:			Revisão:	0
ART de Obra ou Serviço		Estrutura	Escala:	INDICADAS
Visto:			Desenho N°:	E-09/10
		Título do Fecho:	ARMAÇÃO DE VIGAS DA COBERTURA	